

# FENDI

PRIVATE RESIDENCES  
Crans-Montana



Steiger  
& Cie

Sotheby's  
INTERNATIONAL REALTY



In Crans-Montana, the community and lifestyle blend seamlessly with the natural beauty and cultural richness of the Swiss Alps, making it an idyllic destination for those seeking a harmonious and fulfilling way of life.





# CRANS-MONTANA

Nestled in the heart of the Swiss Alps, Crans-Montana is a resort town where untamed natural beauty meets luxury living.

## Natural Splendor

Unparalleled natural splendor, pristine forests, and alpine meadows surround Crans-Montana. In this residence, you will find the purest air in Switzerland — crisp and invigorating — 300 days of sunshine a year and exceptional panoramic views. Here, nature's beauty unfolds in every direction: four cascades, seven lakes, lush alpine meadows, beautiful vineyards, and the 3,000-meter-high Plaine Morte glacier. Whether you seek a leisurely stroll or a thrilling mountain biking escapade, Crans-Montana offers many opportunities to explore and connect with the surroundings.

## Alpine Retreat with Urban Comforts

Crans-Montana combines the tranquility of an alpine retreat with the convenience of urban amenities. Despite its peaceful setting, this resort town offers a comprehensive range of services typically found in cities, from premier healthcare facilities to a diverse selection of shopping and fine dining options, banking services, and prestigious international schools. Embrace the best of both worlds as you indulge in the calmness of the mountains while enjoying the convenience of urban amenities.

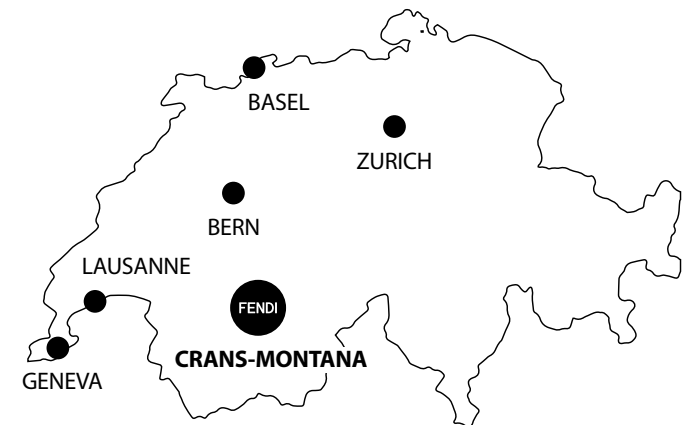
## Captivating Alpine Setting

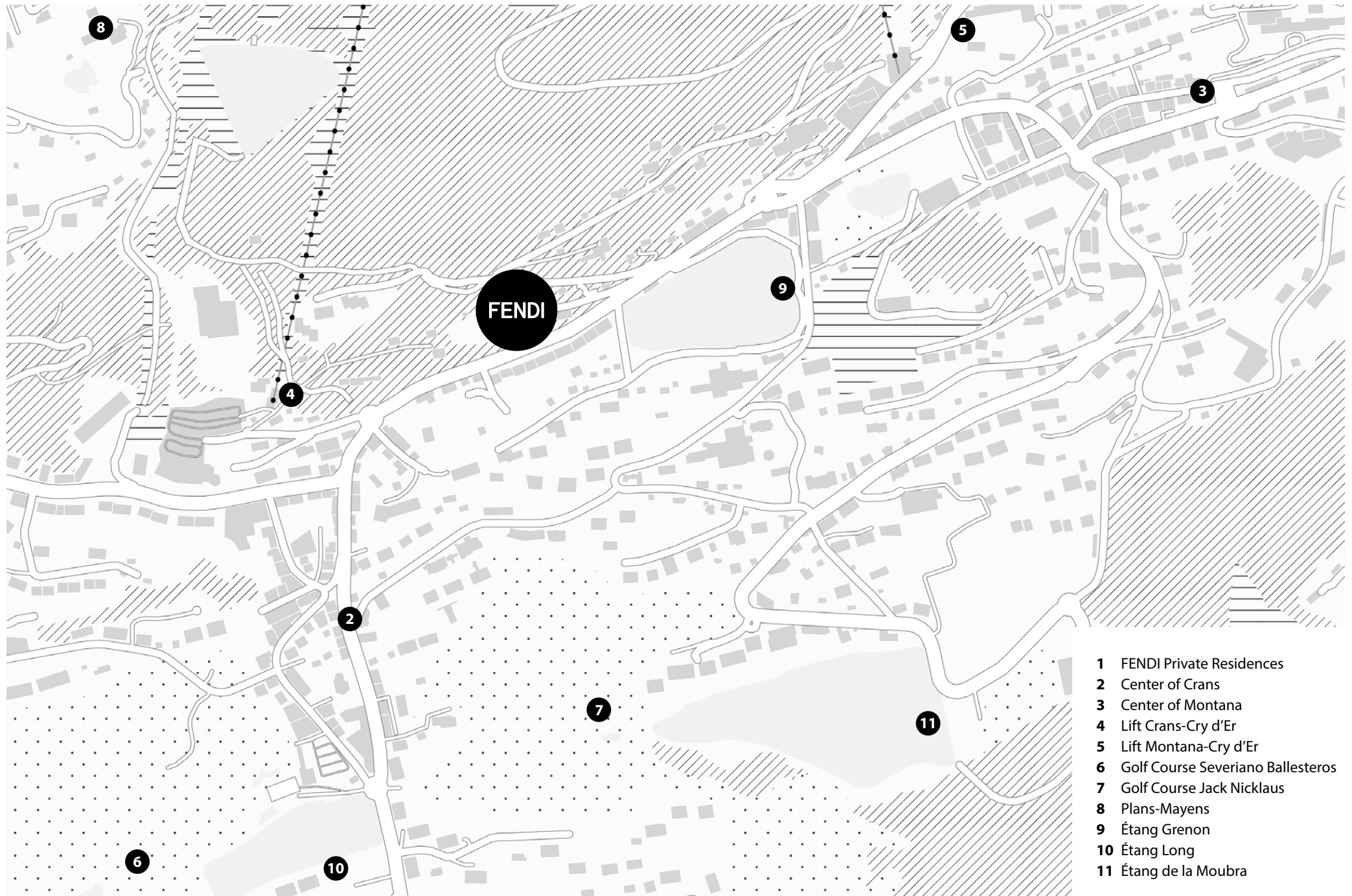
The two neighboring towns of Crans and Montana are perched at approximately 1,500 meters (4,921 feet) on a sundrenched plateau, providing a truly exclusive escape. From this unique vantage point, visitors are treated to breathtaking views of the Rhône Valley, the Valais Alps, and the stunning mountain range from the Matterhorn to Mont Blanc.

## Easy Access: A Seamless Journey to Alpine Bliss

The FENDI Private Residences offer excellent accessibility, ensuring a hassle-free journey whether you prefer air, land, or rail travel.

- By plane: Several airports are located nearby. Sion Airport sits just 30km away, offering quick and easy access. For those traveling from further away, Geneva Airport (180km), Milan Airport (220km), and Zurich Airport (300km) are all within driving distance.
- By helicopter: For a truly luxurious and time-efficient travel option, helicopters can land in the nearby village of Chermignon. From there, it's just a 10-minute car ride to The FENDI Private Residences.
- By train: Sion and Sierre are the closest railway stations, providing direct links to major cities like Geneva, Milan, and Paris. This train service provides a comfortable journey with scenic views along the way.





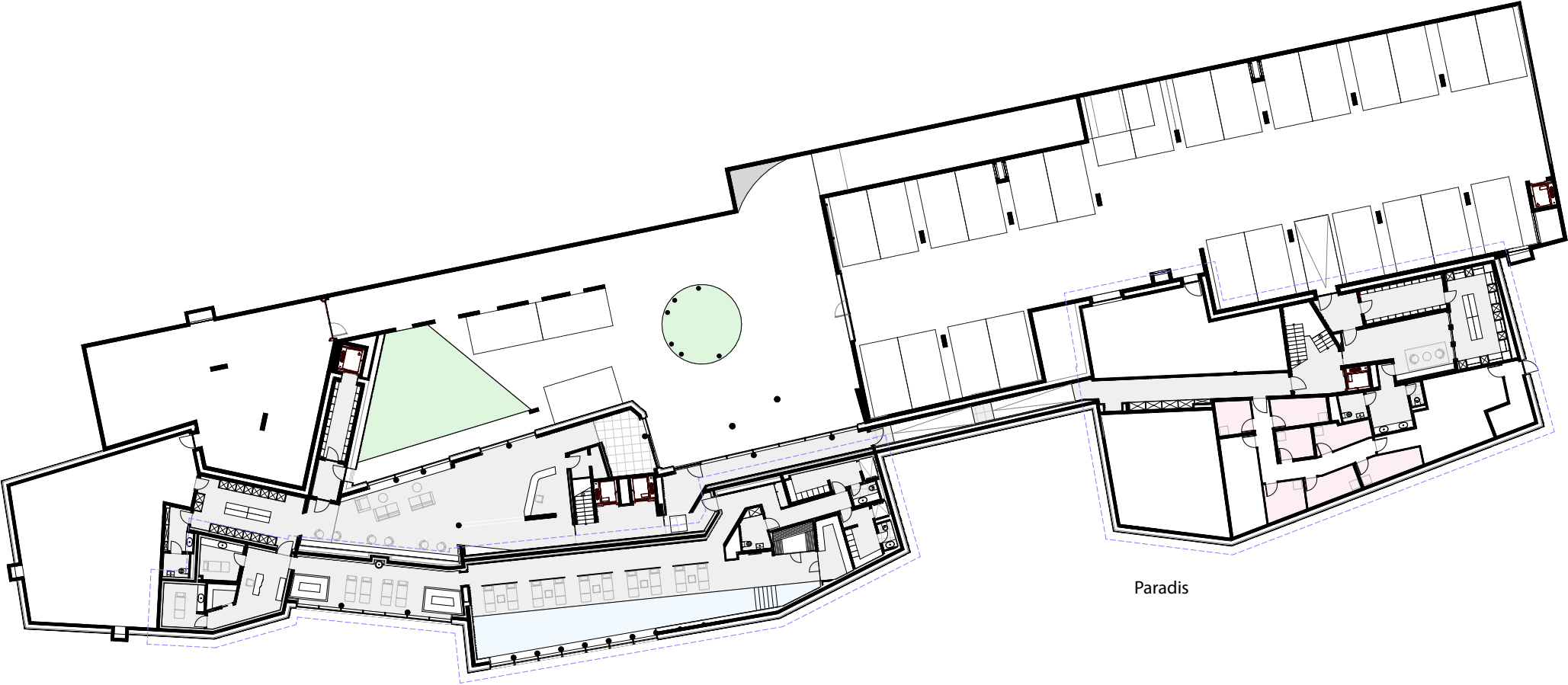








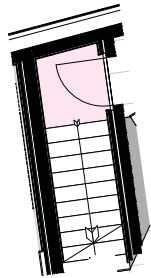
# BASEMENT



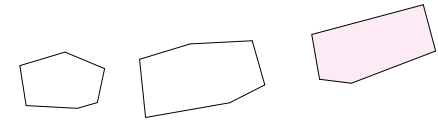
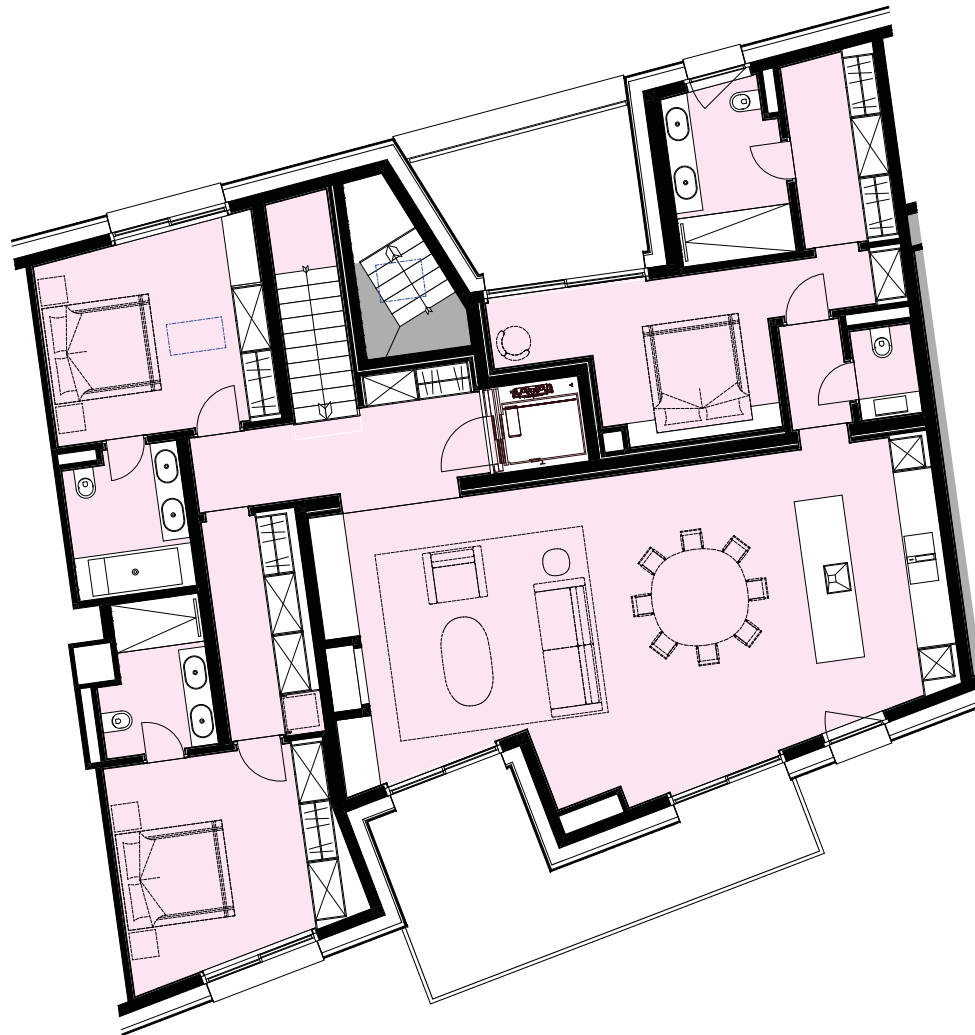
Wellness area

Paradis

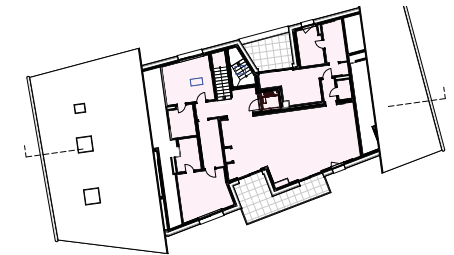
# P31



entrée - niveau +2



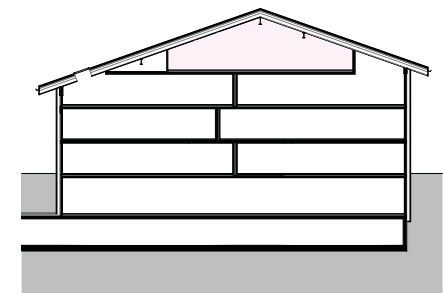
Location plan



Floor plan



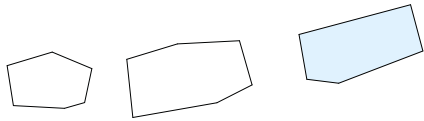
LEVEL	HABITABLE	TERRACE & BALCONY	SALES SURF. (incl. 50% of terrace & balcony)	POOL / SPA GYM / SKIROOM LOBBY*
3rd floor	206 m <sup>2</sup>	28 m <sup>2</sup>	220 m <sup>2</sup>	49 m <sup>2</sup>



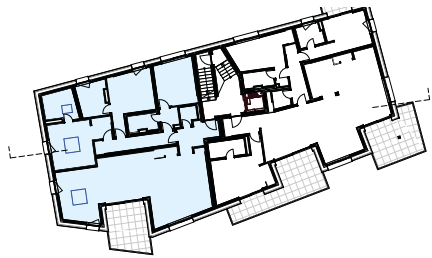
Section

\* The communal areas, encompassing around 600 square meters and including a spa, pool, gym, yoga room, lobby, skiroom are finished to the same high standard as the individual units, with each apartment having a partial ownership stake in these shared facilities and amenities.

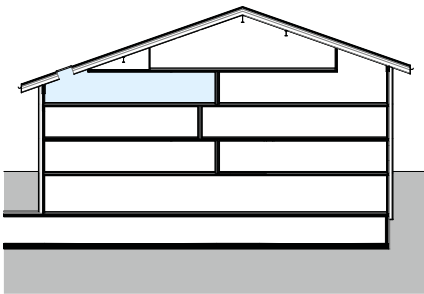
# P21



Location plan



Floor plan



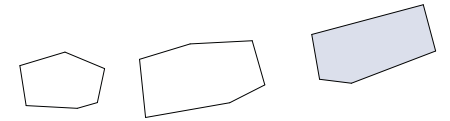
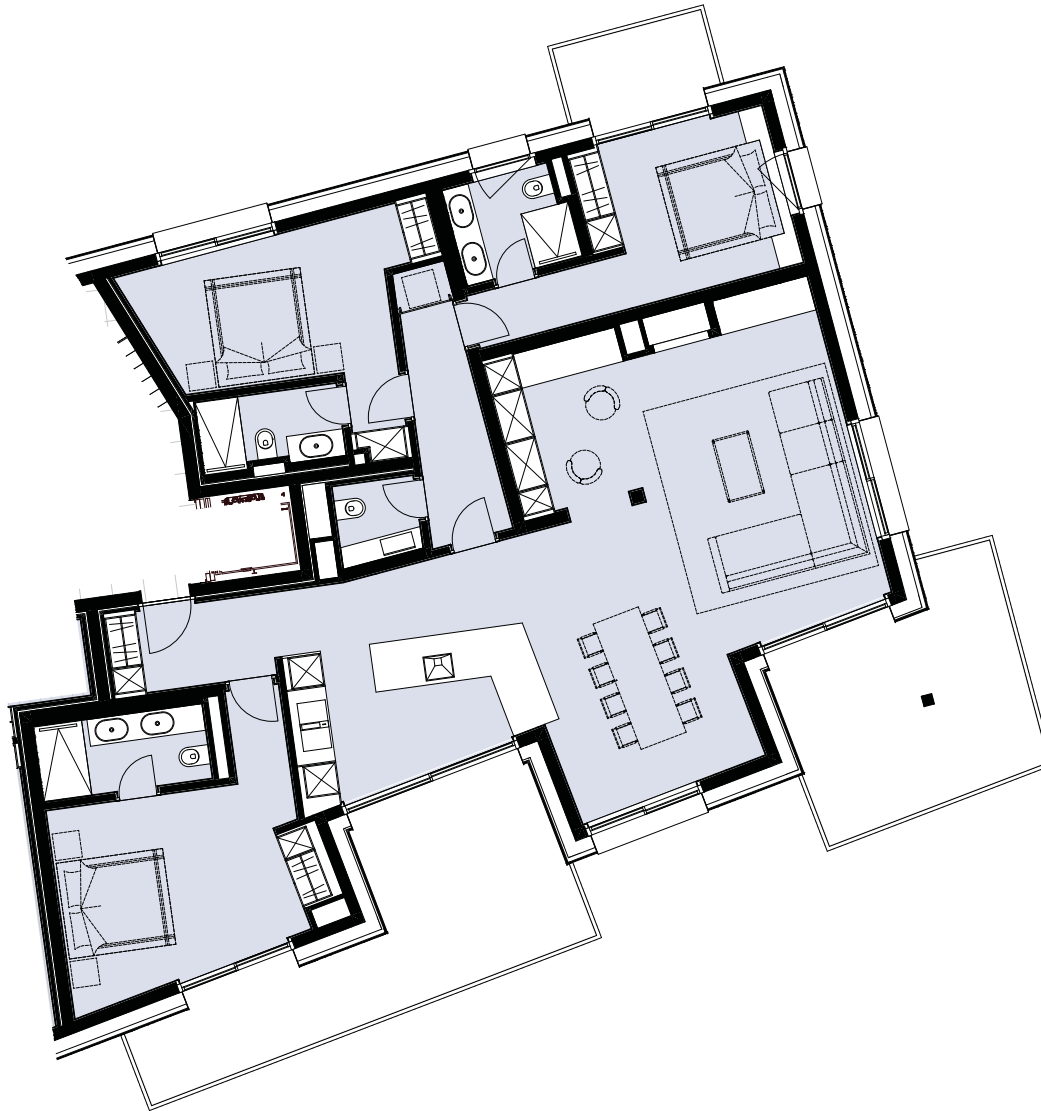
Section



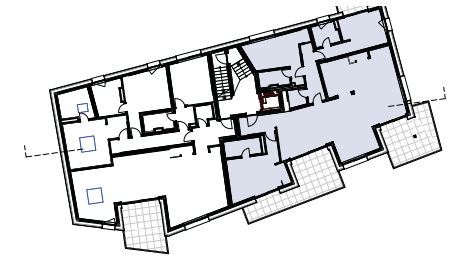
LEVEL	HABITABLE	TERRACE & BALCONY	SALES SURF. (incl. 50% of terrace & balcony)	POOL / SPA GYM / SKIROOM LOBBY*
2nd floor	190 m <sup>2</sup>	14 m <sup>2</sup>	197 m <sup>2</sup>	43 m <sup>2</sup>

\* The communal areas, encompassing around 600 square meters and including a spa, pool, gym, yoga room, lobby, skiroom are finished to the same high standard as the individual units, with each apartment having a partial ownership stake in these shared facilities and amenities.

# P22



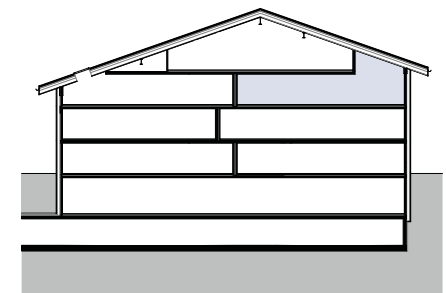
Location plan



Floor plan



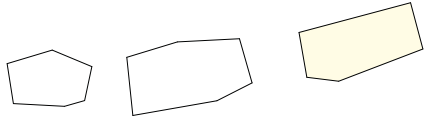
LEVEL	HABITABLE	TERRACE & BALCONY	SALES SURF. (incl. 50% of terrace & balcony)	POOL / SPA GYM / SKIROOM LOBBY*
2nd floor	181 m <sup>2</sup>	44 m <sup>2</sup>	203 m <sup>2</sup>	47 m <sup>2</sup>



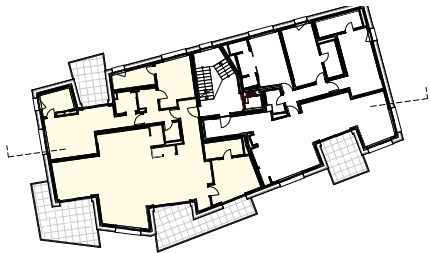
Section

\* The communal areas, encompassing around 600 square meters and including a spa, pool, gym, yoga room, lobby, skiroom are finished to the same high standard as the individual units, with each apartment having a partial ownership stake in these shared facilities and amenities.

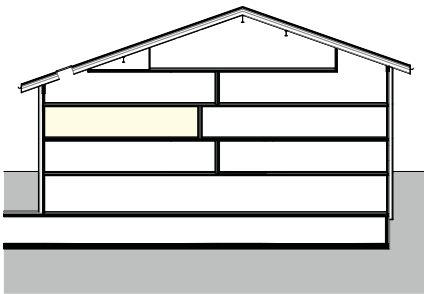
# P11



Location plan



Floor plan



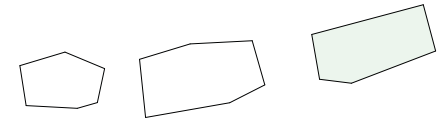
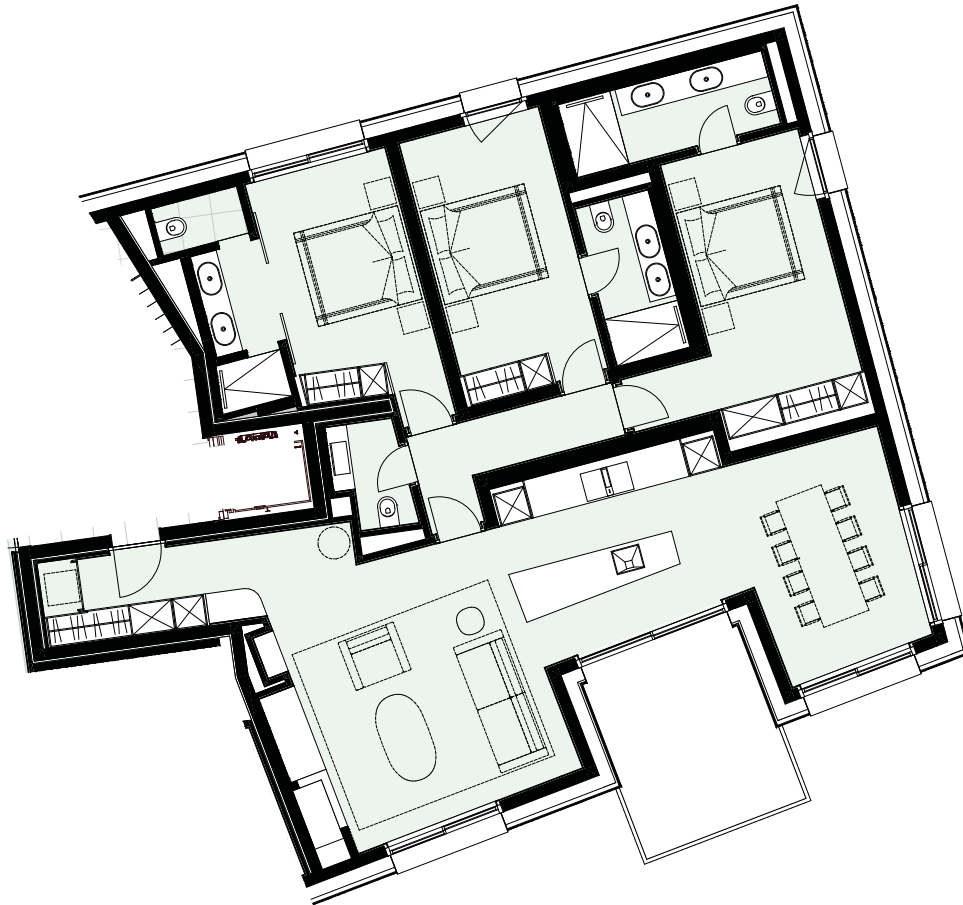
Section



LEVEL	HABITABLE	TERRACE & BALCONY	SALES SURF. (incl. 50% of terrace & balcony)	POOL / SPA GYM / SKIROOM LOBBY*
1st floor	200 m <sup>2</sup>	52 m <sup>2</sup>	226 m <sup>2</sup>	51 m <sup>2</sup>

\* The communal areas, encompassing around 600 square meters and including a spa, pool, gym, yoga room, lobby, skiroom are finished to the same high standard as the individual units, with each apartment having a partial ownership stake in these shared facilities and amenities.

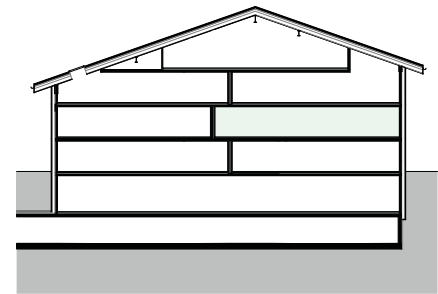
# P12



Location plan



Floor plan



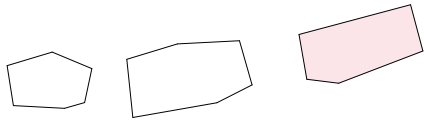
Section



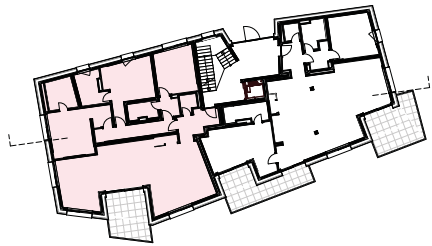
LEVEL	HABITABLE	TERRACE & BALCONY	SALES SURF. (incl. 50% of terrace & balcony)	POOL / SPA GYM / SKIROOM LOBBY*
1st floor	167 m <sup>2</sup>	12 m <sup>2</sup>	173 m <sup>2</sup>	37 m <sup>2</sup>

\* The communal areas, encompassing around 600 square meters and including a spa, pool, gym, yoga room, lobby, skiroom are finished to the same high standard as the individual units, with each apartment having a partial ownership stake in these shared facilities and amenities.

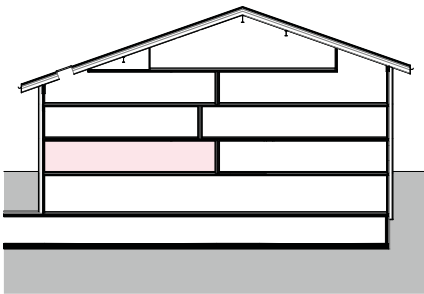
# P01



Location plan



Floor plan



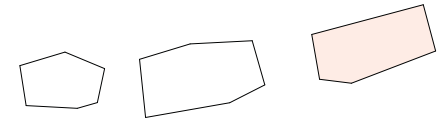
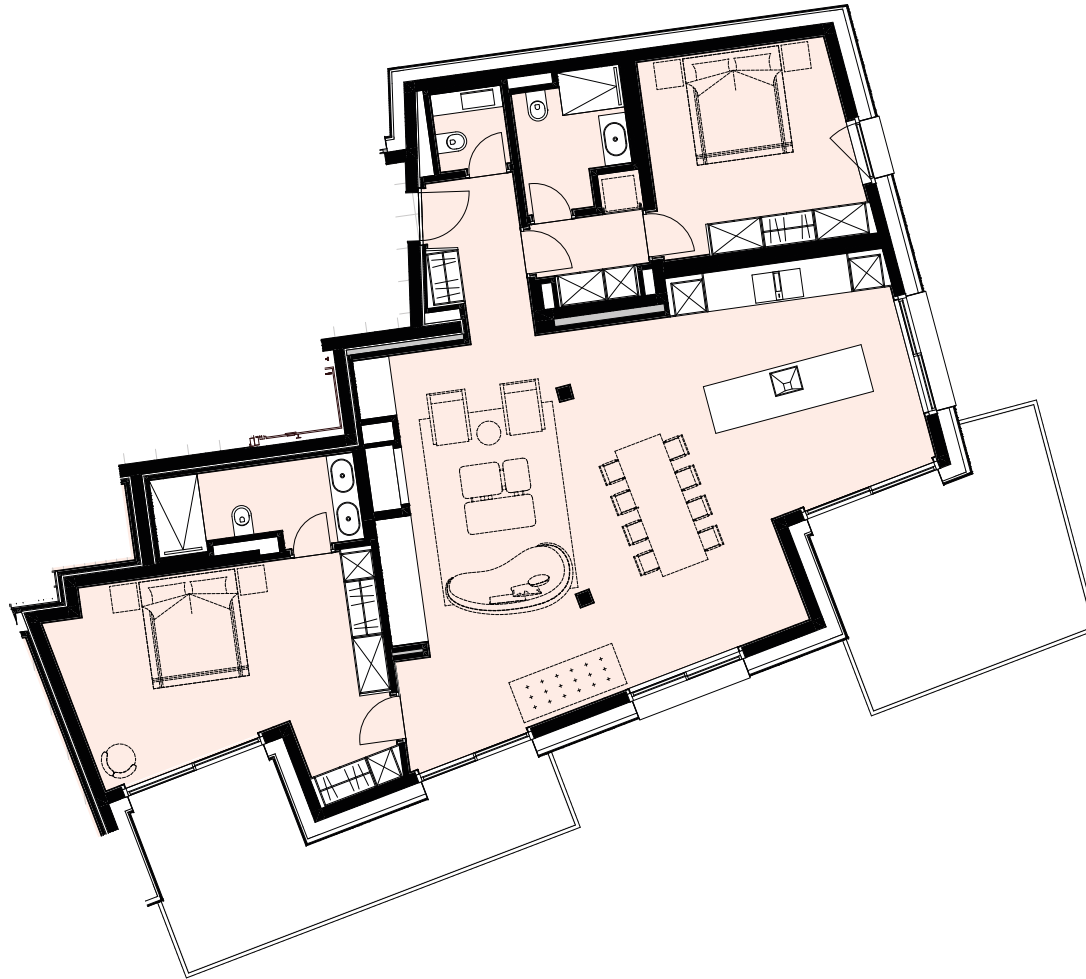
Section



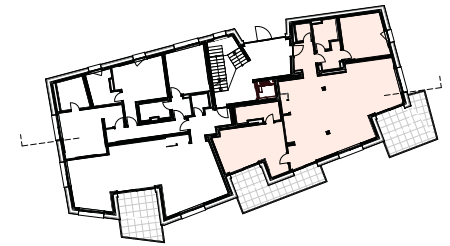
LEVEL	HABITABLE	TERRACE & BALCONY	SALES SURF. (incl. 50% of terrace & balcony)	POOL / SPA GYM / SKIROOM LOBBY*
Ground floor	190 m <sup>2</sup>	14 m <sup>2</sup>	197 m <sup>2</sup>	41 m <sup>2</sup>

\* The communal areas, encompassing around 600 square meters and including a spa, pool, gym, yoga room, lobby, skiroom are finished to the same high standard as the individual units, with each apartment having a partial ownership stake in these shared facilities and amenities.

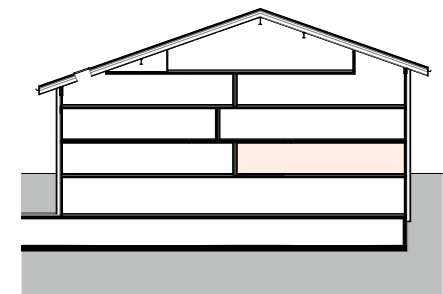
# P02



Location plan



Floor plan



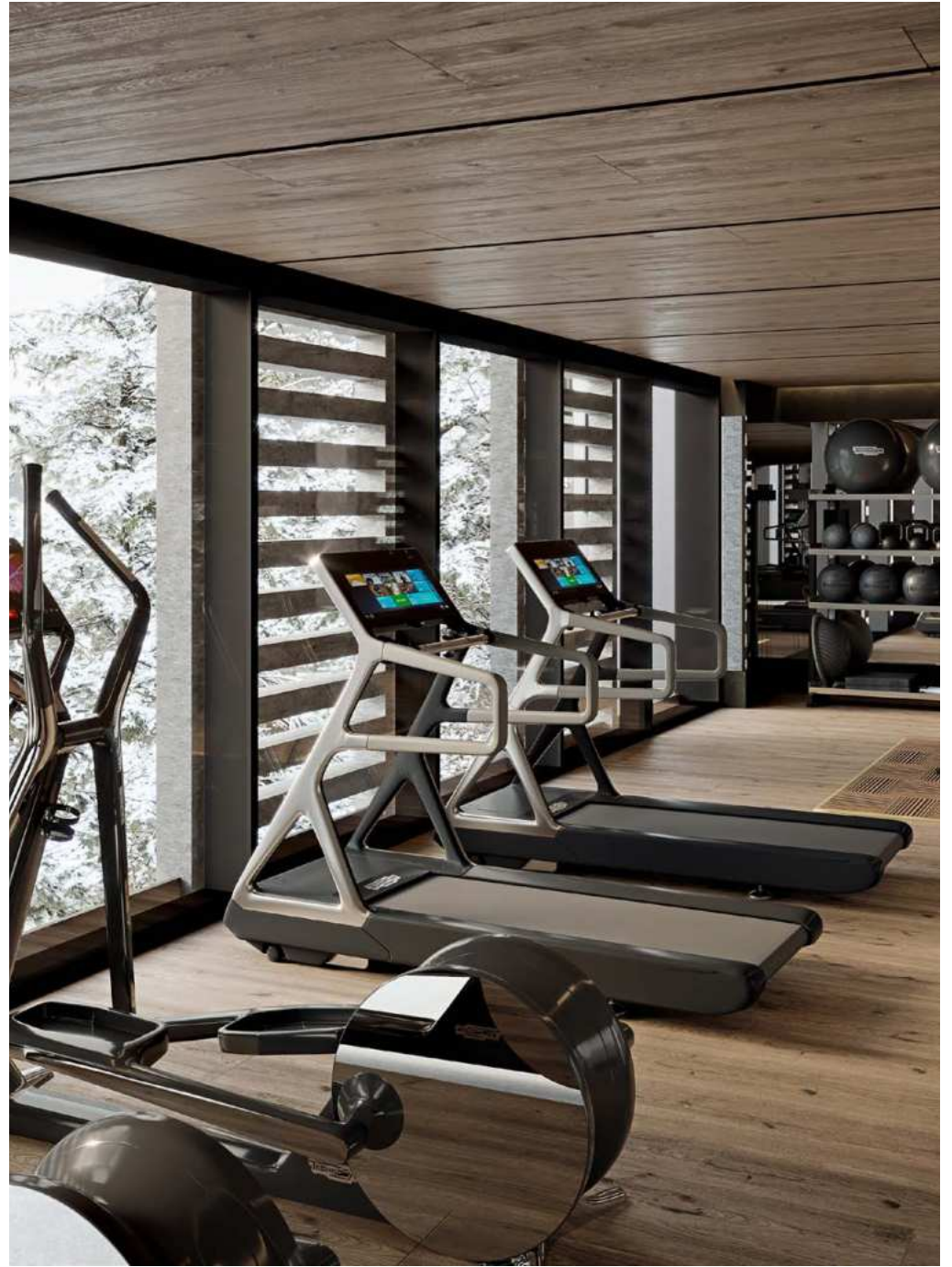
Section



LEVEL	HABITABLE	TERRACE & BALCONY	SALES SURF. (incl. 50% of terrace & balcony)	POOL / SPA GYM / SKIROOM LOBBY*
Ground floor	155 m <sup>2</sup>	35 m <sup>2</sup>	173 m <sup>2</sup>	38 m <sup>2</sup>

\* The communal areas, encompassing around 600 square meters and including a spa, pool, gym, yoga room, lobby, skiroom are finished to the same high standard as the individual units, with each apartment having a partial ownership stake in these shared facilities and amenities.







# CONTACT

"The unveiling of the FENDI Private Residences in Crans-Montana is a historic moment for Steiger&Cie as we embark on a journey to bring the iconic FENDI lifestyle into the heart of the Swiss Alps"

Florian Steiger

"We are glad to present this new residential project in Crans-Montana. Ours is a true commitment to providing the finest living experiences and with its stunning location, impeccable design, exceptional amenities, FENDI Private Residences offers a unique opportunity."

Serge Brunschwig, FENDI Chairman and CEO

Steiger&Cie Sotheby's International Realty  
Rue du Prado 33  
3963 Crans-Montana

info@fendiprivate residences.ch  
+41 27 771 81 73

FENDIPRIVATERESIDENCES.CH

**FENDIPRIVATERESIDENCES.CH**

Steiger  
& Cie

Sotheby's  
INTERNATIONAL REALTY